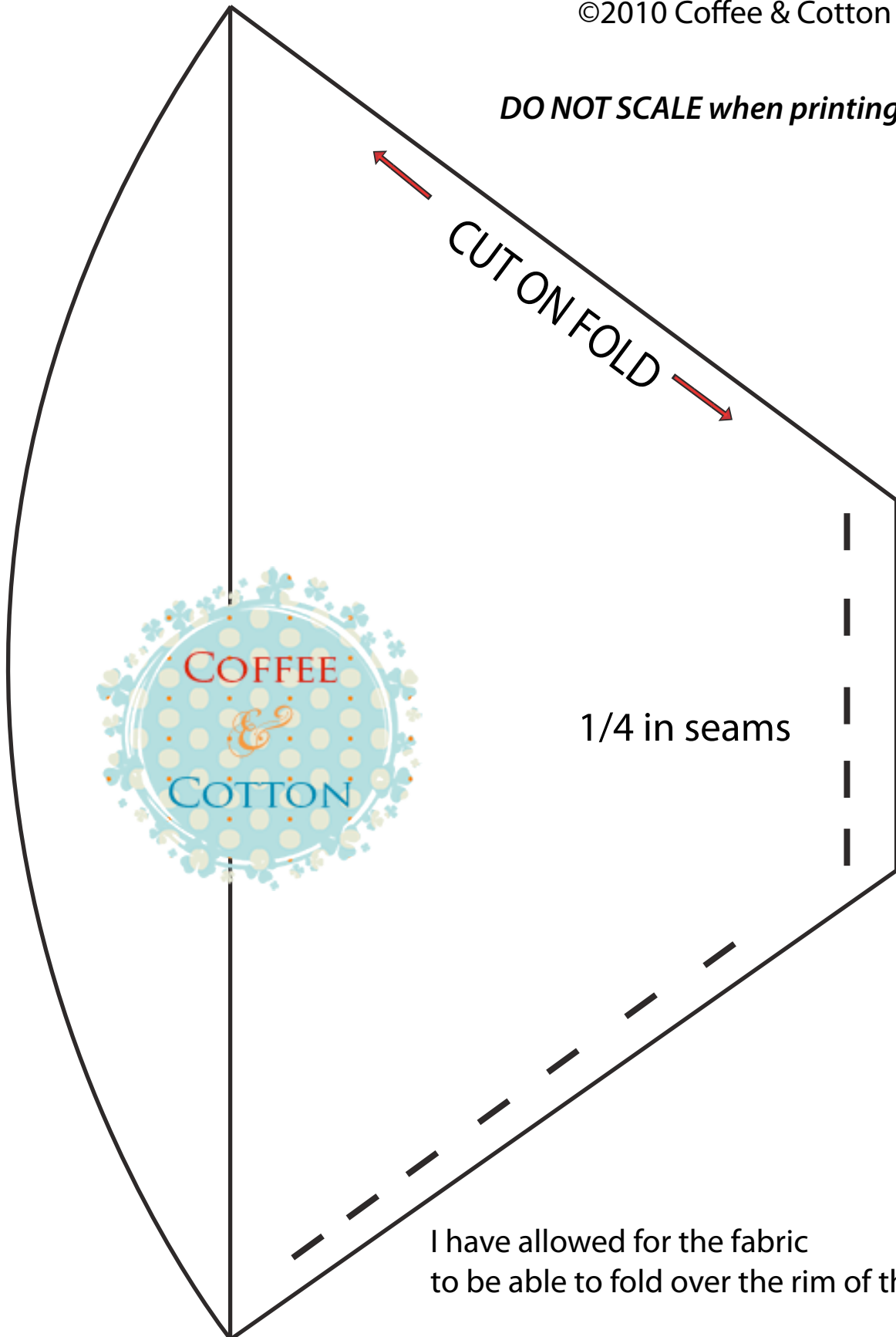


Coffee filter to fit the #4 size cone-type filter (Melitta)  
Cut 1, on fold, from muslin, preferably organic  
{organic hemp or bamboo fabric would also be good}

©2010 Coffee & Cotton

*DO NOT SCALE when printing*



I have allowed for the fabric  
to be able to fold over the rim of the cone filter